

Spokane Employees' Retirement System

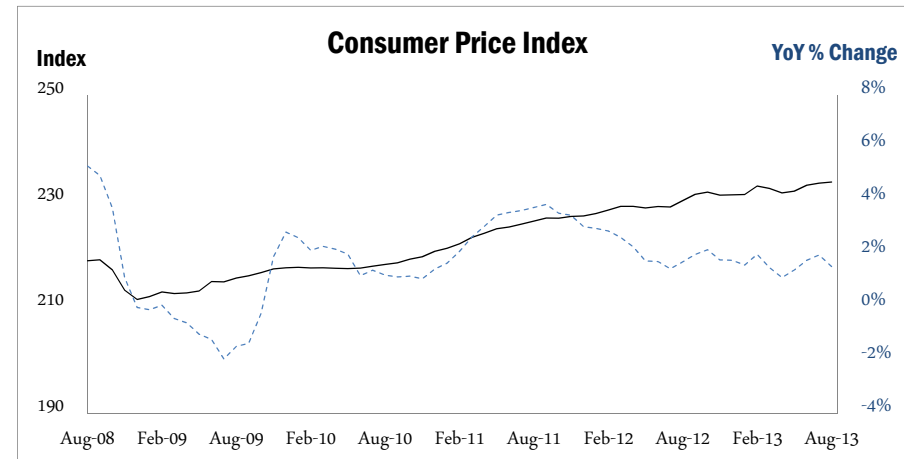
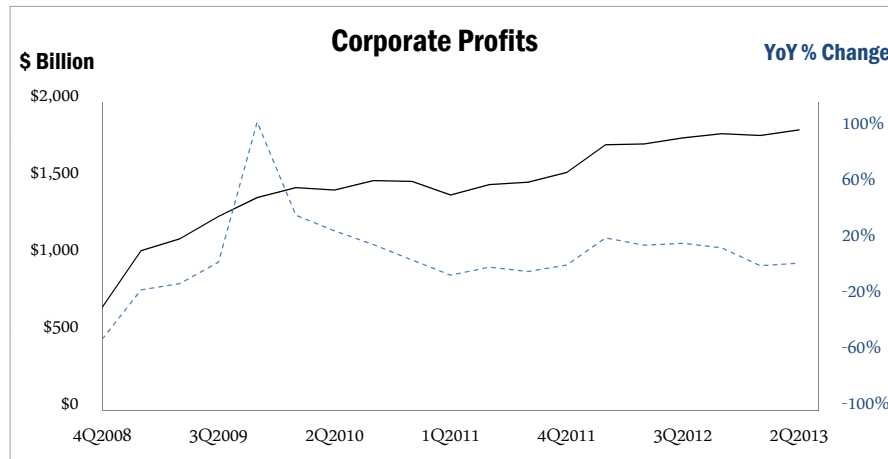
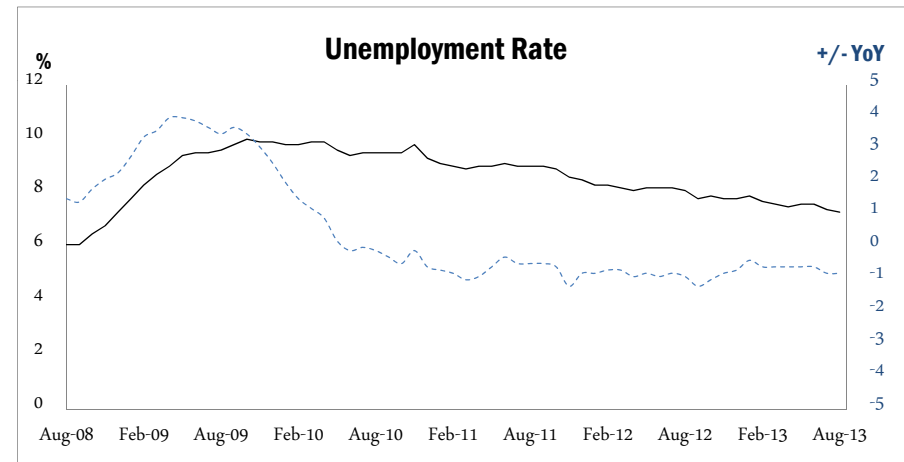
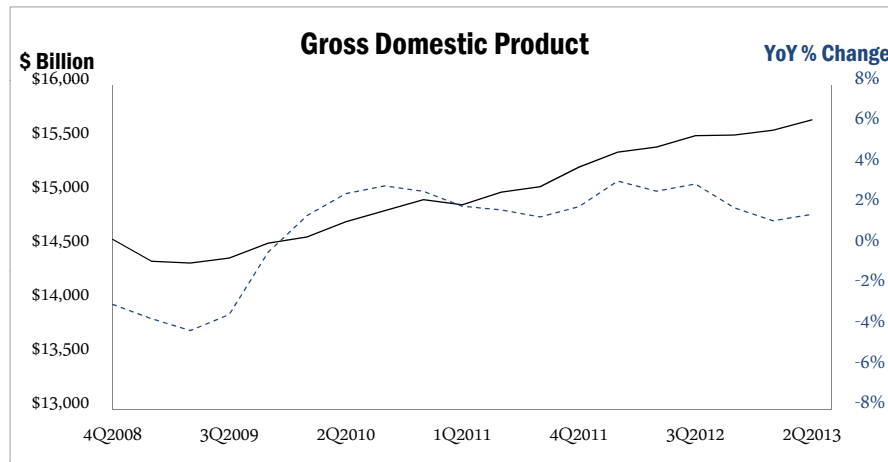
Third Quarter 2013 Performance Report

November 2013



Hyas Group • 108 NW 9th Avenue Suite 203 Portland, Oregon 97209 • p: 971.634.1500 f: 971.275.1856
www.hyasgroup.com

3Q2013 Economic Data



Banking and Lending (Quarterly)					
Category	Recent	5-Yr High	5-Yr Low	5-Yr Avg.	Date
% Loans Non-Performing	3.2%	5.7%	2.3%	4.3%	2Q13
Loss Reserves/Loans	2.0%	3.7%	2.0%	2.8%	2Q13
Total Commercial Banks	5,887	7,042	5,887	6,454	2Q13
% Tightening Lending	-19.1%	83.6%	-21.8%	7.9%	2Q13

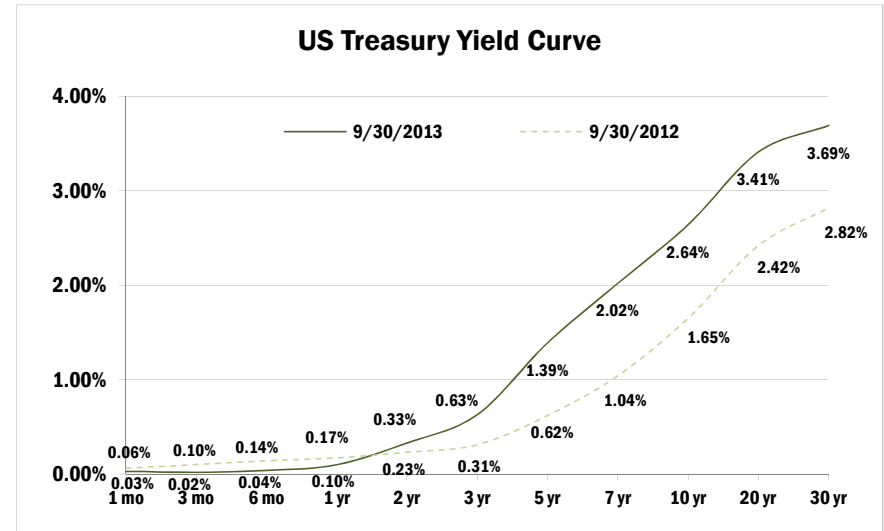
Other Prices and Indexes (Monthly)					
Category	Recent	5-Yr High	5-Yr Low	% Off Peak	Date
Gas: Price per Gallon	\$3.58	\$3.90	\$1.72	-8.2%	Jul-13
Spot Oil	\$104.61	\$116.61	\$39.16	-10.3%	Jul-13
Case-Shiller Home Price Index	159.2	162.1	136.9	-1.8%	Jul-13
Medical Care CPI	424.9	424.9	365.0	16.4%*	Jul-13

Source: Federal Reserve Bank of St. Louis

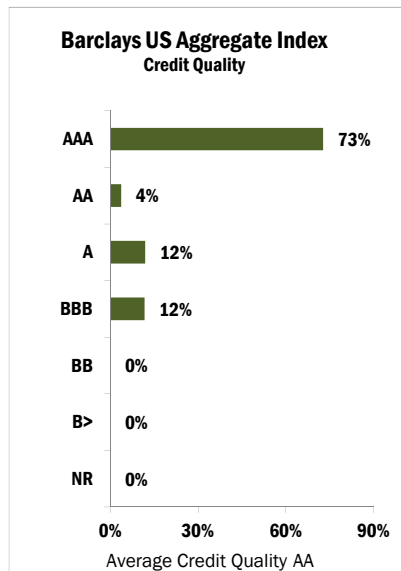
*% Off Low

3Q2013 Bond Market Data

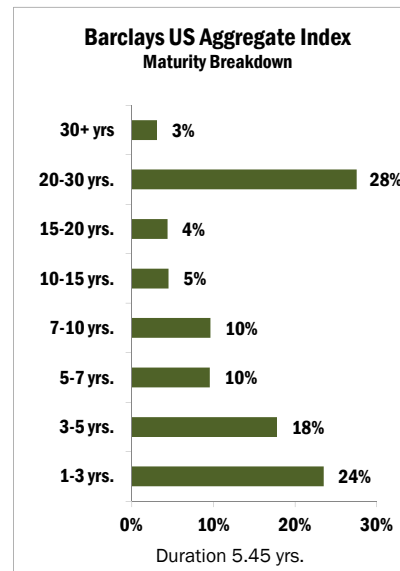
Index	QTR	YTD	1 yr.	3 yrs.	5 yrs.	10 yrs.
90-Day T-Bill	0.01%	0.05%	0.09%	0.09%	0.16%	1.60%
Barclays US Aggregate	0.57%	-1.89%	-1.68%	2.86%	5.41%	4.59%
Barclays Short US Treasury	0.05%	0.13%	0.17%	0.19%	0.36%	1.82%
Barclays Int. US Treasury	0.41%	-0.88%	-0.86%	1.82%	3.49%	3.76%
Barclays Long US Treasury	-2.23%	-9.88%	-10.58%	3.65%	6.50%	6.15%
Barclays US TIPS	0.70%	-6.74%	-6.10%	4.02%	5.31%	5.23%
Barclays US Credit	0.72%	-2.91%	-1.90%	4.13%	8.54%	5.19%
Barclays US Mortgage-Backed	1.03%	-1.00%	-1.20%	2.65%	4.66%	4.75%
Barclays US Asset-Backed	0.16%	-0.59%	-0.38%	2.20%	5.91%	3.49%
Barclays US High Yield	2.28%	3.73%	7.14%	9.19%	13.53%	8.86%
Barclays Global	2.80%	-2.17%	-2.64%	2.09%	5.07%	4.92%
Barclays International	4.38%	-2.38%	-3.39%	1.52%	4.80%	5.12%
Barclays Emerging Market	1.38%	-5.24%	-2.12%	5.70%	10.43%	8.95%



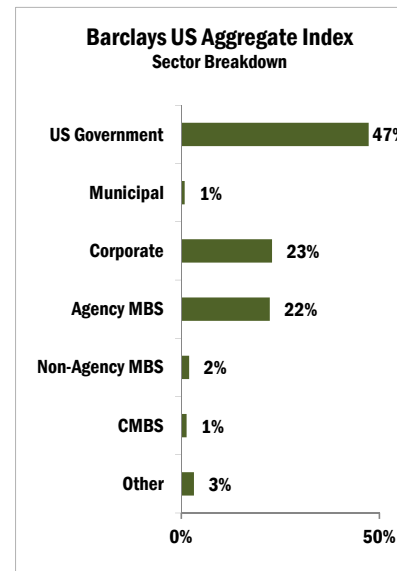
Source: Department of US Treasury



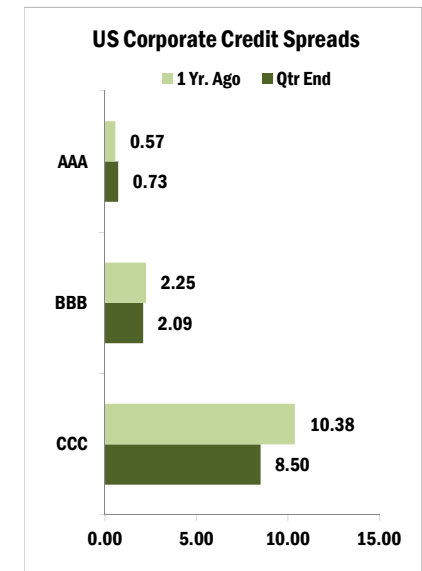
Source: Morningstar



Source: Morningstar



Source: Morningstar



Source: Federal Reserve / Bank of America

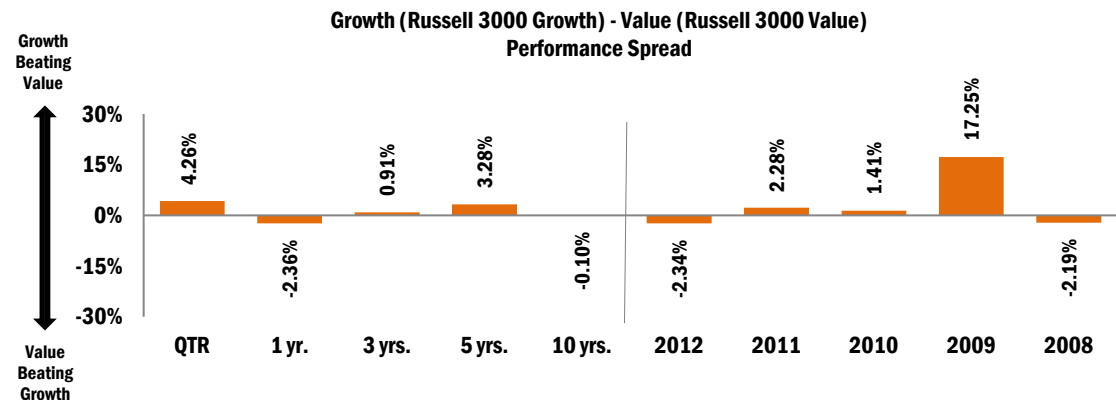
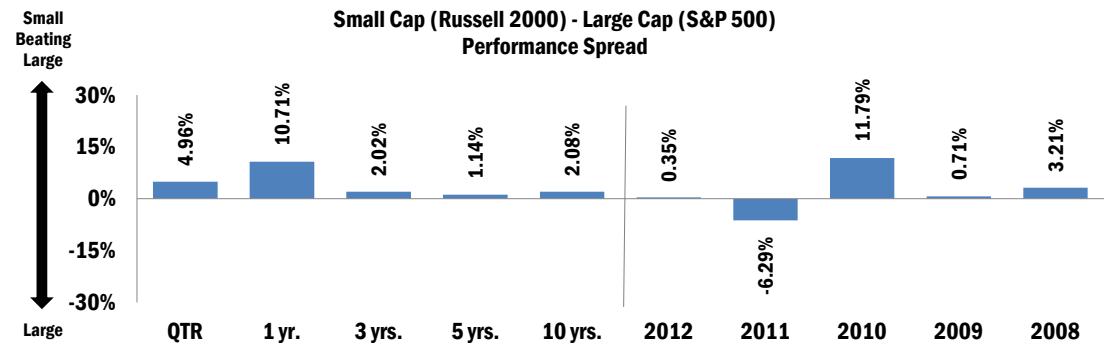
3Q2013 US Equity Market Data

Sectors Weights/Returns (ranked by quarter performance)

	Wgt.	Sector	QTR	1 Yr.
S&P 500 Index	4%	Materials	10.30%	16.55%
	11%	Industrials	8.91%	28.50%
	12%	Consumer Discretionary	7.79%	31.84%
	13%	Health Care	6.82%	28.55%
	18%	Information Technology	6.62%	6.91%
	10%	Energy	5.15%	12.25%
	16%	Financials	2.87%	30.20%
	10%	Consumer Staples	0.80%	14.05%
	3%	Utilities	0.19%	6.99%
	2%	Telecom Services	-4.40%	-0.68%
S&P Midcap 400 Index	6%	Energy	15.59%	27.65%
	16%	Industrials	11.66%	42.71%
	1%	Telecom Services	11.42%	15.84%
	16%	Information Technology	9.99%	20.97%
	14%	Consumer Discretionary	9.08%	30.69%
	7%	Materials	8.72%	21.27%
	9%	Health Care	6.69%	31.66%
	23%	Financials	2.62%	19.74%
	5%	Utilities	2.54%	21.55%
	4%	Consumer Staples	0.86%	47.03%
S&P Smallcap 600 Index	5%	Energy	15.24%	33.77%
	18%	Information Technology	14.72%	36.87%
	10%	Health Care	14.42%	34.43%
	15%	Industrials	13.81%	38.55%
	6%	Materials	12.35%	31.07%
	4%	Consumer Staples	11.94%	31.13%
	16%	Consumer Discretionary	8.91%	34.80%
	21%	Financials	5.00%	23.53%
	0%	Telecom Services	3.96%	-13.17%
	3%	Utilities	2.15%	10.16%

Index Performance Data

Index	QTR	YTD	1 yr.	Annualized		
				3 yrs.	5 yrs.	10 yrs.
S&P 500	5.24%	19.79%	19.34%	16.27%	10.02%	7.57%
Russell 1000 Value	3.94%	20.47%	22.30%	16.25%	8.86%	7.99%
Russell 1000 Growth	8.11%	20.87%	19.27%	16.94%	12.07%	7.82%
Russell Mid Cap	7.70%	24.34%	27.91%	17.53%	12.97%	10.78%
Russell Mid Cap Value	5.89%	22.94%	27.77%	17.27%	11.86%	10.91%
Russell Mid Cap Growth	9.34%	25.42%	27.54%	17.65%	13.92%	10.16%
Russell 2000	10.21%	27.69%	30.06%	18.29%	11.15%	9.64%
Russell 2000 Value	7.59%	23.07%	27.04%	16.57%	9.13%	9.29%
Russell 2000 Growth	12.80%	32.47%	33.07%	19.96%	13.17%	9.85%
Russell 3000	6.35%	21.30%	21.60%	16.76%	10.58%	8.11%
DJ US Select REIT	-3.15%	2.33%	4.70%	12.09%	5.30%	9.29%



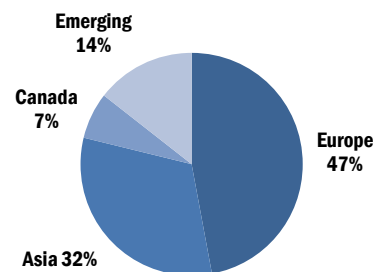
3Q2013 International Market Data

Index Performance Data (net)

Index (US\$)	QTR	YTD	1 yr.	3 yrs.	5 yrs.	10 yrs.
MSCI ACWI ex-US	10.09%	10.04%	16.48%	5.95%	6.26%	8.77%
MSCI EAFE	11.56%	16.14%	23.77%	8.47%	6.35%	8.01%
Europe	13.61%	16.09%	24.23%	8.73%	6.03%	8.47%
United Kingdom	12.04%	12.35%	17.03%	10.19%	7.69%	8.11%
Germany	12.71%	15.97%	25.84%	10.84%	5.95%	10.91%
France	15.43%	19.16%	32.07%	6.92%	3.84%	7.66%
Pacific	7.99%	16.45%	23.32%	8.34%	7.34%	7.13%
Japan	6.66%	24.31%	31.50%	8.91%	5.16%	4.84%
Hong Kong	8.89%	7.50%	13.58%	6.67%	13.17%	11.40%
Australia	11.94%	5.08%	12.27%	7.84%	11.04%	12.97%
Canada	8.82%	1.57%	2.24%	2.75%	4.00%	10.64%
MSCI EM	5.77%	-4.35%	0.98%	-0.33%	7.22%	12.80%
MSCI EM Latin America	4.12%	-11.29%	-7.48%	-6.25%	3.67%	17.28%
MSCI EM Asia	5.32%	-1.61%	4.22%	1.64%	9.74%	11.72%
MSCI EM Eur/Mid East	9.64%	-2.95%	3.24%	-0.03%	2.32%	9.60%
MSCI ACWI Value ex-US	11.36%	9.70%	16.77%	5.76%	6.14%	9.06%
MSCI ACWI Growth ex-US	8.83%	10.35%	16.16%	6.11%	6.33%	8.42%
MSCI AC World Sm Cap ex-US	12.38%	14.43%	20.04%	7.27%	11.38%	11.12%

Regional Exposure

MSCI ACWI ex-USA

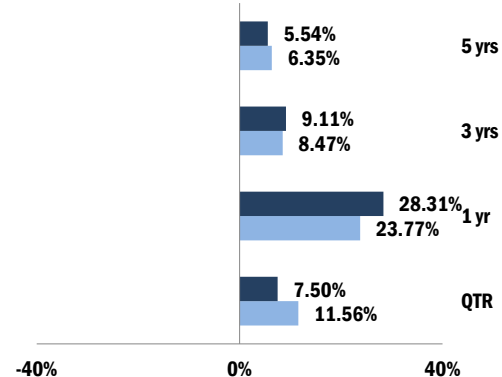


Top 10 Countries (MSCI AC World ex-USA)

Japan	16%
UK	16%
Canada	7%
France	7%
Germany	6%
Switzerland	6%
Australia	6%
China	4%
South Korea	3%
Taiwan	2%

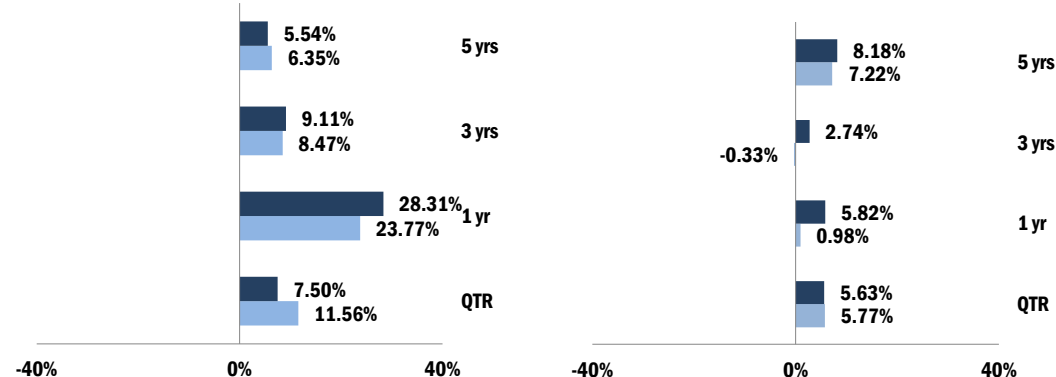
MSCI EAFE Index Return

Local (Dark Blue), US\$ (Light Blue)



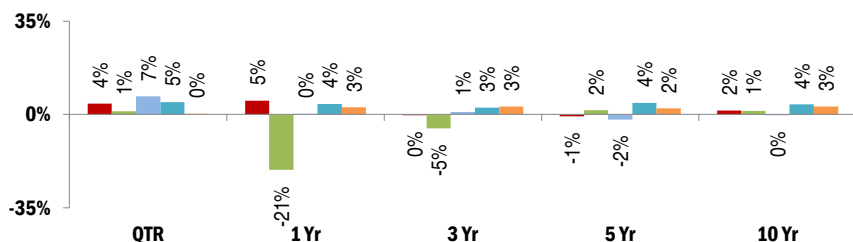
MSCI Emerging Index Return

Local (Dark Blue), US\$ (Light Blue)



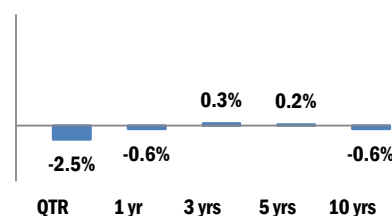
Foreign Currency v. US\$ Returns

Euro (Red), Japanese Yen (Green), Pound Sterling (Blue), Swiss Franc (Cyan), Chinese Yuan (Orange)



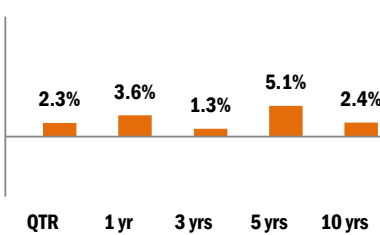
MSCI ACWI Ex US Value v. Growth Performance Spread

Growth Beating Value (Upward Arrow), Value Beating Growth (Downward Arrow)



MSCI ACWI Ex US Large v. Small Cap Performance Spread

Small Beating Large (Upward Arrow), Large Beating Small (Downward Arrow)



Exchange Rates	3Q13	2Q13	1Q13	4Q12	3Q12	2Q12
Japanese Yen	98.13	99.34	94.02	86.47	77.80	79.79
Euro	0.74	0.77	0.78	0.76	0.78	0.79
British Pound	0.62	0.66	0.66	0.62	0.62	0.64
Swiss Franc	0.90	0.95	0.95	0.92	0.94	0.95
Chinese Yuan	6.12	6.14	6.21	6.23	6.28	6.35

Historical Market Returns

Ranked by Performance

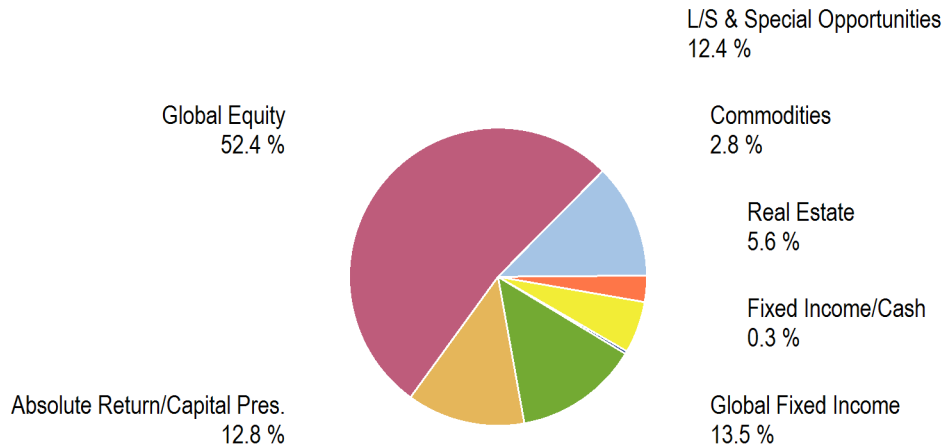
1999	2000	2001	2002	2003	2004	2005	2006	2007	2008	2009	2010	2011	2012	3Q13	YTD
Emerging Markets 66.49%	Commod. 31.84%	US Bonds 8.44%	Commod. 25.91%	Emerging Markets 55.82%	Emerging Markets 25.55%	Emerging Markets 34.00%	Emerging Markets 32.14%	Emerging Markets 39.42%	US Bonds 5.24%	Emerging Markets 78.51%	Small Cap 26.85%	Core Real Estate 14.96%	Emerging Markets 18.22%	Small Cap 10.21%	Small Cap 27.69%
Intl 30.63%	TIPS 13.18%	TIPS 7.90%	TIPS 16.57%	Small Cap 47.25%	Intl 20.91%	Commod. 21.36%	Intl 26.65%	Intl 16.65%	Global Bonds 4.79%	High Yield 58.21%	Mid Cap 25.48%	TIPS 13.56%	Mid Cap 17.28%	Intl 10.09%	Mid Cap 24.34%
Commod. 24.35%	Core Real Estate 13.17%	High Yield 5.28%	Global Bonds 16.52%	Intl 40.83%	Mid Cap 20.22%	Core Real Estate 20.15%	Small Cap 18.37%	Commod. 16.23%	Cash 1.39%	Intl 41.45%	Emerging Markets 18.88%	US Bonds 7.84%	Intl 16.83%	Mid Cap 7.70%	Large Cap 19.79%
Small Cap 21.26%	US Bonds 11.63%	Core Real Estate 4.61%	US Bonds 10.26%	Mid Cap 40.06%	Small Cap 18.33%	Intl 16.62%	Large Cap 15.79%	Core Real Estate 14.84%	TIPS -2.35%	Mid Cap 40.48%	Commod. 16.83%	Global Bonds 5.64%	Small Cap 16.35%	Global Balanced 5.89%	Intl 10.04%
Large Cap 21.04%	Mid Cap 8.25%	Cash 3.34%	Core Real Estate 4.58%	High Yield 28.97%	Global Balanced 12.18%	Mid Cap 12.65%	Core Real Estate 15.27%	TIPS 11.64%	Core Real Estate -10.70%	Small Cap 27.17%	Core Real Estate 15.26%	High Yield 4.98%	Large Cap 16.00%	Emerging Markets 5.77%	Core Real Estate 9.63%
Mid Cap 18.23%	Cash 5.98%	Small Cap 2.49%	Cash 1.63%	Large Cap 28.68%	Core Real Estate 12.00%	Large Cap 4.91%	Mid Cap 15.26%	Global Bonds 9.48%	Global Balanced -24.51%	Large Cap 26.46%	High Yield 15.12%	Large Cap 2.11%	High Yield 15.81%	Large Cap 5.24%	Global Balanced 9.38%
Global Balanced 12.98%	Global Bonds 3.17%	Global Bonds 1.57%	High Yield -1.41%	Global Balanced 24.27%	High Yield 11.13%	Small Cap 4.55%	Global Balanced 14.53%	Global Balanced 9.07%	High Yield -26.16%	Global Balanced 20.49%	Large Cap 15.06%	Cash 0.06%	Global Balanced 11.06%	Core Real Estate 3.31%	High Yield 3.73%
Core Real Estate 12.05%	Small Cap -3.02%	Emerging Markets -2.62%	Emerging Markets -6.17%	Commod. 23.93%	Large Cap 10.88%	Global Balanced 4.16%	High Yield 11.85%	US Bonds 6.97%	Small Cap -33.79%	Commod. 18.91%	Intl 11.15%	Global Balanced -0.97%	Core Real Estate 9.76%	Global Bonds 2.80%	Cash 0.04%
Cash 4.78%	High Yield -5.86%	Mid Cap -5.62%	Global Balanced -6.58%	Global Bonds 12.51%	Global Bonds 9.27%	Cash 3.25%	Global Bonds 6.64%	Mid Cap 5.60%	Commod. -35.65%	TIPS 11.41%	Global Balanced 9.40%	Mid Cap -1.55%	TIPS 6.98%	High Yield 2.28%	US Bonds -1.89%
High Yield 2.39%	Global Balanced -6.70%	Global Balanced -9.04%	Intl -14.95%	TIPS 8.40%	Commod. 9.15%	TIPS 2.84%	Cash 4.85%	Large Cap 5.49%	Large Cap -37.00%	Global Bonds 6.93%	US Bonds 6.54%	Small Cap -4.18%	Global Bonds 4.32%	Commod. 2.13%	Global Bonds -2.17%
TIPS 2.39%	Large Cap -9.10%	Large Cap -11.89%	Mid Cap -16.19%	Core Real Estate 8.28%	TIPS 8.46%	High Yield 2.74%	US Bonds 4.33%	Cash 4.44%	Mid Cap -41.46%	US Bonds 5.93%	TIPS 6.31%	Commod. -13.32%	US Bonds 4.21%	TIPS 0.70%	Emerging Markets -4.35%
US Bonds -0.82%	Intl -15.31%	Commod. -19.51%	Small Cap -20.48%	US Bonds 4.10%	US Bonds 4.34%	US Bonds 2.43%	Commod. 2.07%	High Yield 1.87%	Intl -45.53%	Cash 0.16%	Global Bonds 5.54%	Intl -13.71%	Cash 0.08%	US Bonds 0.57%	TIPS -6.74%
Global Bonds -5.17%	Emerging Markets -30.83%	Intl -19.73%	Large Cap -22.10%	Cash 1.03%	Cash 1.44%	Global Bonds -4.49%	TIPS 0.41%	Small Cap -1.57%	Emerging Markets -53.33%	Core Real Estate -30.40%	Cash 0.15%	Emerging Markets -18.42%	Commod. -1.06%	Cash 0.01%	Commod. -8.56%

Global Balanced is composed of 60% MSCI World Stock Index, 35% Barclays Global Aggregate Bond Index, and 5% US 90-Day T-Bills.

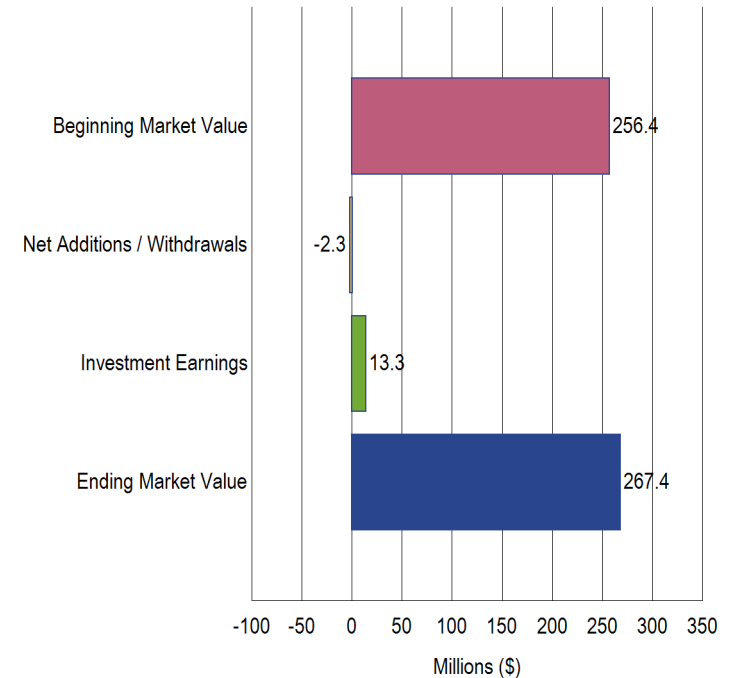
Spokane Employees' Retirement System

As of September 30, 2013

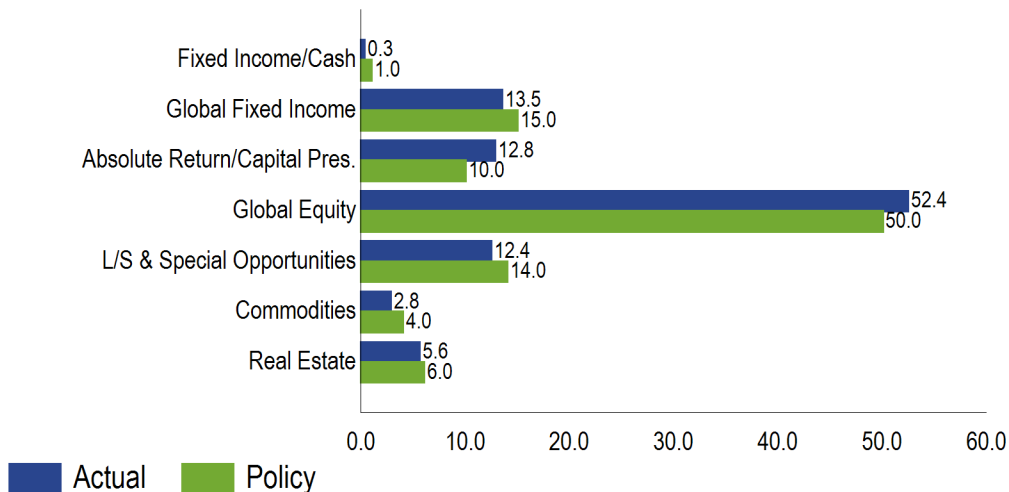
Current Allocation



Current Quarter



Actual vs Target Allocation (%)



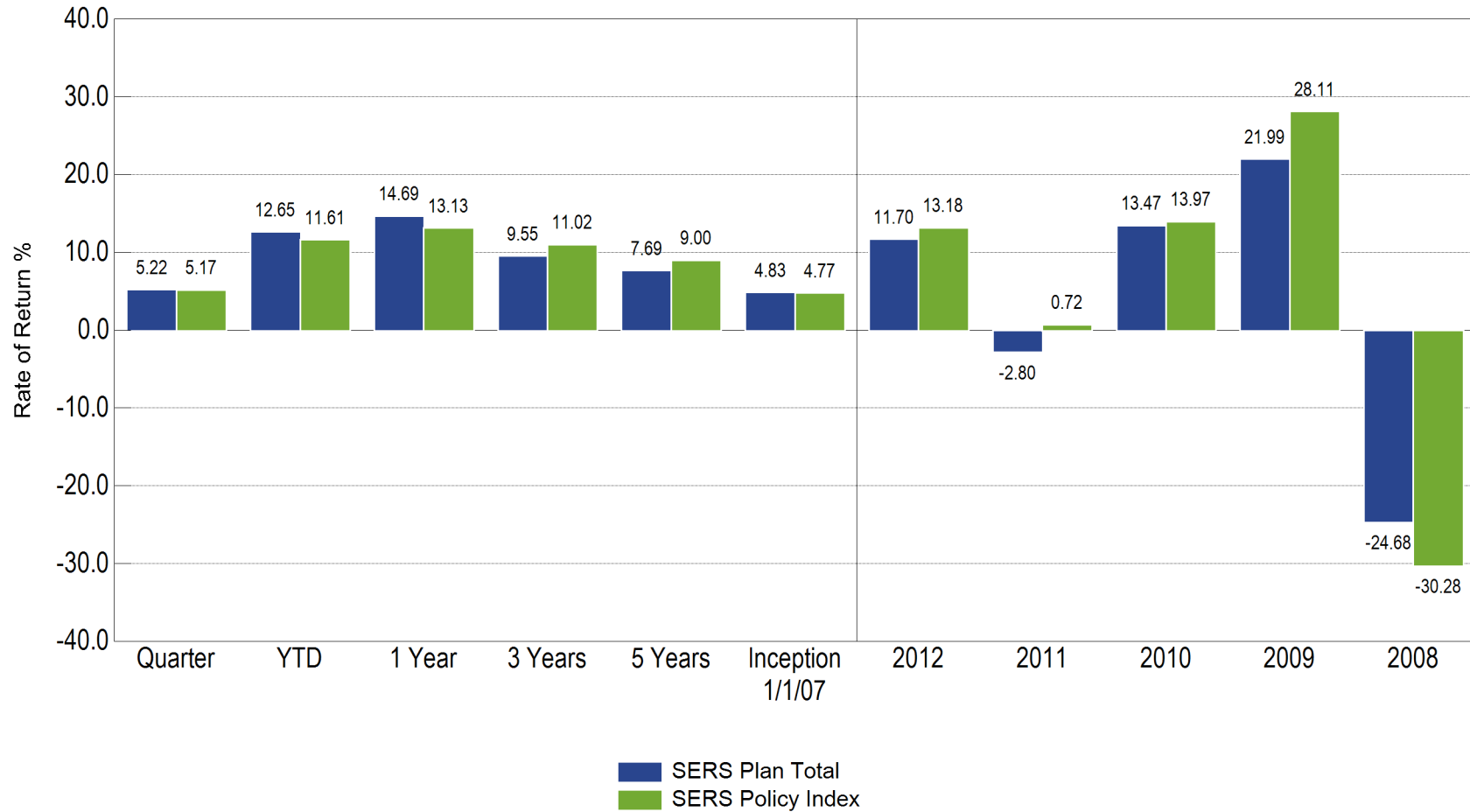
Current Market Value:

\$267,383,686

Policy Index

Index	Weight
US 90 Day T-Bill	1%
Barclays US Aggregate Bond Index	15%
Barclays Corporate High Yield Index	5%
Barclays Global Aggregate Bond Index	5%
S&P 500 Index	34%
Russell Mid Cap Index	8%
Russell 2000 Index	5%
MSCI ACWI ex-US	17%
S&P GSCI Index	4%
NAREIT Composite	3%
NCREIF Property Index	3%

Return Summary
Ending September 30, 2013



Performance Net of Fees

Performance greater than 1 year is annualized

Spokane Employees' Retirement System

As of September 30, 2013

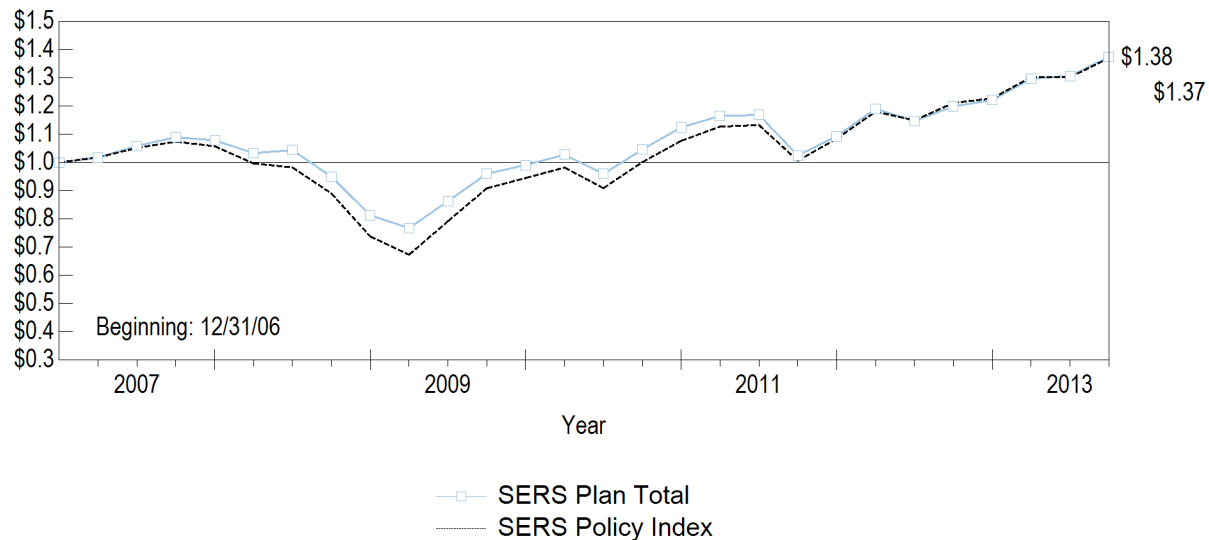
Total Account Performance Summary

	3 Mo (%)	YTD (%)	1 Yr (%)	3 Yrs (%)	5 Yrs (%)	2012 (%)	2011 (%)	2010 (%)	2009 (%)	2008 (%)	Return (%)	Since
SERS Plan Total	5.22	12.65	14.69	9.55	7.69	11.70	-2.80	13.47	21.99	-24.68	4.83	Jan-07
SERS Policy Index	5.17	11.61	13.13	11.02	9.00	13.18	0.72	13.97	28.11	-30.28	4.77	Jan-07
Over/Under	0.05	1.04	1.56	-1.47	-1.31	-1.48	-3.52	-0.50	-6.12	5.60	0.06	
70/30 S&P 500/Barclays Aggregate	3.86	12.94	12.72	12.29	9.00	12.49	4.08	12.92	20.44	-26.03	5.23	Jan-07
Fixed Income Total	1.93	0.16	1.51	4.08	6.10	8.22	3.12	5.99	10.76	4.07	5.74	Apr-07
Barclays Aggregate	0.57	-1.89	-1.68	2.86	5.41	4.21	7.84	6.54	5.93	5.24	5.08	Apr-07
Over/Under	1.36	2.05	3.19	1.22	0.69	4.01	-4.72	-0.55	4.83	-1.17	0.66	
Absolute Return/Capital Pres	0.70	2.96	4.25	4.49	1.13	6.68	2.63	-0.34	-0.05	-11.23	-0.06	Jan-08
HFRI FOF: Conservative Index	1.21	4.86	6.58	2.64	1.46	4.22	-3.55	5.07	9.65	-19.86	-0.47	Jan-08
Over/Under	-0.51	-1.90	-2.33	1.85	-0.33	2.46	6.18	-5.41	-9.70	8.63	0.41	
Barclays Aggregate	0.57	-1.89	-1.68	2.86	5.41	4.21	7.84	6.54	5.93	5.24	4.80	Jan-08
Long Short/Special Opps Total	3.65	10.67	11.11	4.06	4.33	3.81	-6.31	7.61	17.81	--	1.87	Apr-08
HFRI Fund of Funds Composite Index	1.63	5.05	6.44	2.45	1.92	4.79	-5.72	5.70	11.47	-21.37	0.08	Apr-08
Over/Under	2.02	5.62	4.67	1.61	2.41	-0.98	-0.59	1.91	6.34		1.79	
S&P 500	5.25	19.79	19.34	16.27	10.02	16.00	2.11	15.06	26.46	-37.00	6.81	Apr-08
Large Cap Equity Total	6.48	21.69	22.02	15.71	9.82	15.42	-0.61	15.76	27.61	-37.39	5.59	Apr-07
S&P 500	5.25	19.79	19.34	16.27	10.02	16.00	2.11	15.06	26.46	-37.00	4.89	Apr-07
Over/Under	1.23	1.90	2.68	-0.56	-0.20	-0.58	-2.72	0.70	1.15	-0.39	0.70	
Mid Cap Equity Total	8.29	26.14	28.71	16.08	11.63	14.18	-2.95	22.88	37.22	-35.55	7.72	Apr-07
Russell MidCap	7.70	24.34	27.91	17.53	12.97	17.28	-1.55	25.48	40.48	-41.46	6.42	Apr-07
Over/Under	0.59	1.80	0.80	-1.45	-1.34	-3.10	-1.40	-2.60	-3.26	5.91	1.30	
Small Cap Equity Total	10.43	28.27	30.36	17.83	10.08	12.78	-3.08	26.03	24.96	-39.70	4.18	Apr-07
Russell 2000	10.21	27.69	30.06	18.29	11.15	16.35	-4.18	26.86	27.17	-33.79	6.09	Apr-07
Over/Under	0.22	0.58	0.30	-0.46	-1.07	-3.57	1.10	-0.83	-2.21	-5.91	-1.91	

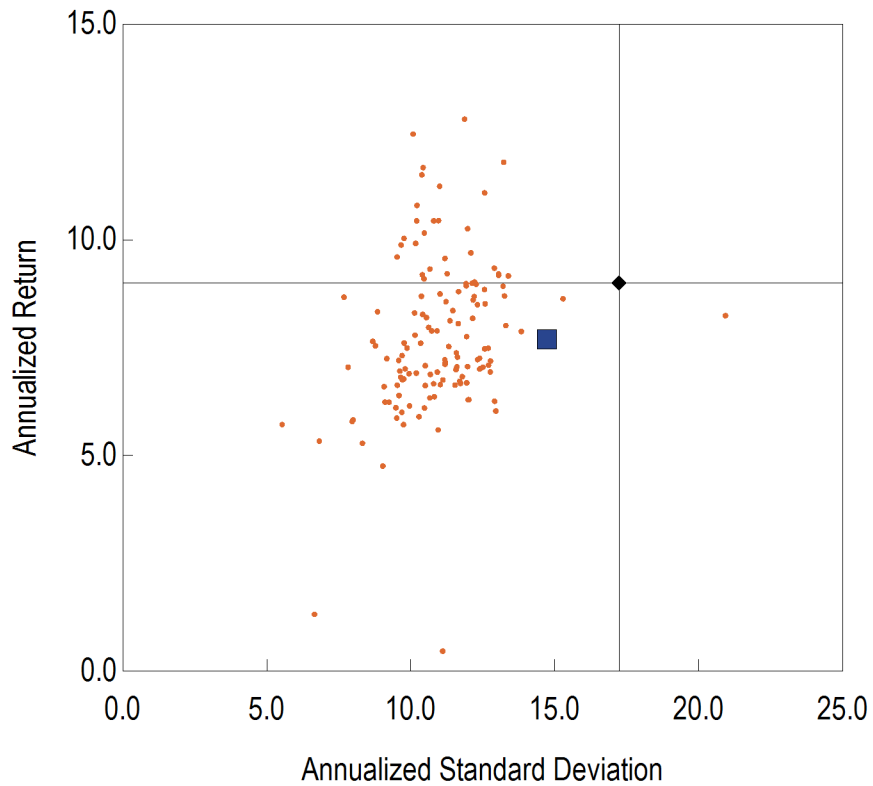
Total Account Performance Summary

	3 Mo (%)	YTD (%)	1 Yr (%)	3 Yrs (%)	5 Yrs (%)	2012 (%)	2011 (%)	2010 (%)	2009 (%)	2008 (%)	Return (%)	Since
International Equity Total	9.29	13.75	20.03	7.95	8.00	18.48	-13.72	17.28	38.62	-39.76	4.10	Apr-07
MSCI ACWI ex USA	10.09	10.04	16.48	5.95	6.26	16.83	-13.71	11.15	41.45	-45.53	1.02	Apr-07
Over/Under	-0.80	3.71	3.55	2.00	1.74	1.65	-0.01	6.13	-2.83	5.77	3.08	
Commodities Total	5.41	-3.45	-6.33	1.36	--	-1.87	-3.28	7.17	--	--	4.81	Apr-09
S&P GSCI Total Return Index	4.78	-0.89	-4.15	3.59	-8.46	0.08	-1.18	9.03	13.48	-46.49	7.02	Apr-09
Over/Under	0.63	-2.56	-2.18	-2.23		-1.95	-2.10	-1.86			-2.21	
DJ UBS Commodity TR USD	2.13	-8.56	-14.35	-3.16	-5.29	-1.06	-13.32	16.83	18.91	-35.65	3.41	Apr-09
Real Estate Total	0.19	8.28	12.38	12.76	5.10	15.17	9.44	23.35	13.84	-30.09	1.36	Apr-07
RE Index - SERS	-2.77	2.61	4.93	12.35	5.91	18.63	8.33	27.83	28.01	-38.25	0.99	Apr-07
Over/Under	2.96	5.67	7.45	0.41	-0.81	-3.46	1.11	-4.48	-14.17	8.16	0.37	

GROWTH OF A DOLLAR

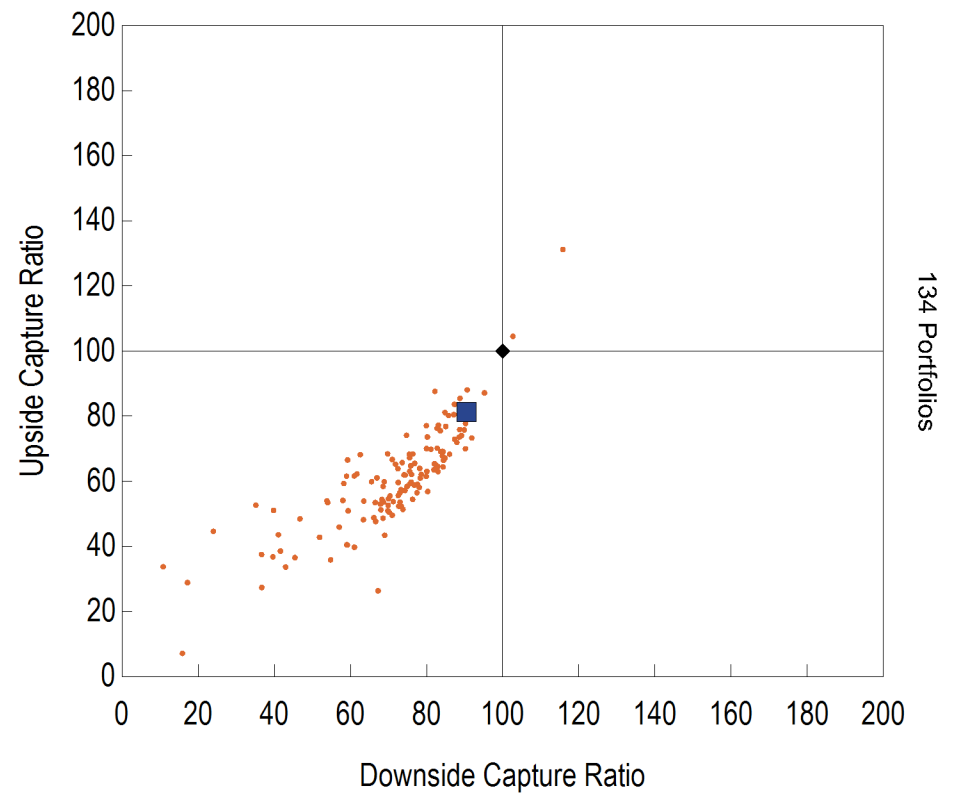


Annualized Return vs. Annualized Standard Deviation
5 Years Ending September 30, 2013



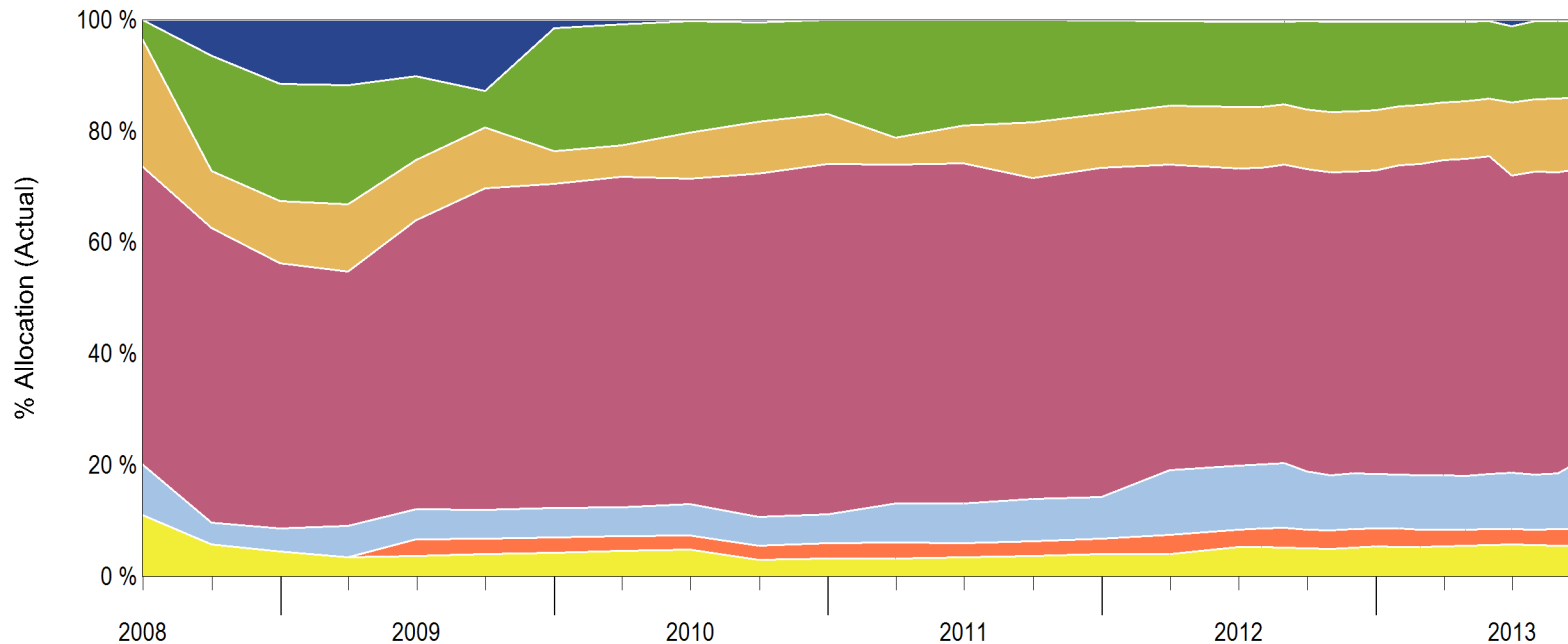
- SERS Plan Total
- ◆ SERS Policy Index
- IFx All DB \$250mm-\$1B Net

Upside Capture Ratio vs. Downside Capture Ratio
5 Years Ending September 30, 2013



- SERS Plan Total
- ◆ SERS Policy Index
- IFx All DB \$250mm-\$1B Net

Asset Allocation History
5 Years 3 Months Ending September 30, 2013



6.4	11.5	11.7	10.1	12.8	1.5	0.8	0.2	0.5	0.0	0.0	0.0	0.0	0.1	0.2	0.3	0.3	0.3	0.3	1.2	0.3
20.8	21.0	21.4	15.2	6.5	22.0	21.8	20.1	17.8	16.8	21.2	19.0	18.4	16.9	15.2	15.4	15.8	15.9	14.4	13.6	13.5
10.2	11.2	12.1	10.8	11.0	6.0	5.7	8.3	9.3	8.9	4.8	6.8	10.0	9.7	10.6	11.0	10.8	10.8	10.4	13.2	12.8
52.9	47.6	45.6	51.8	57.7	58.2	59.3	58.4	61.7	63.0	60.9	61.1	57.6	59.1	54.9	53.4	54.3	54.6	56.7	53.4	52.4
4.0	4.2	5.6	5.4	5.2	5.2	5.2	5.6	5.2	5.2	7.0	7.1	7.6	7.5	11.5	11.5	10.5	9.8	9.7	10.1	12.4
--	--	0.0	3.0	2.7	2.8	2.6	2.6	2.5	2.7	2.8	2.6	2.6	2.7	3.5	3.2	3.4	3.2	3.1	2.8	2.8
5.7	4.5	3.5	3.7	4.1	4.3	4.6	4.8	3.0	3.3	3.3	3.5	3.7	4.1	4.1	5.3	5.1	5.4	5.4	5.8	5.6

- Fixed Income/Cash
 Global Equity
 Commodities
- Global Fixed Income
 L/S & Special Opportunities
 Real Estate
- Absolute Return/Capital Pres.